



**ANKER**  
PROFESSIONAL CARPET



# SolutionDyed

Colour-fast and hard-wearing – all the way through





**SD**  
Solution Dyed

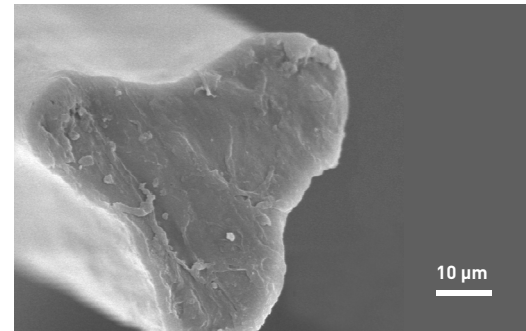
# SolutionDyed

Colour-fast and hard-wearing – all the way through

High levels of public use, frequent cleaning with aggressive agents, intense sunlight and other (environmental) influences place significant demands on textile floor coverings, particularly in the commercial sector. Here, carpet flooring with extreme endurance and excellent colour fastness – even after many years' use – is much sought after.

The answer is ANKER floor coverings made from SolutionDyed fibres, which successfully stand up to numerous kinds of wear and tear such as UV radiation or treatment with chlorine-based detergents, combining resilience with easy maintenance. As such, they possess ideal qualities for business use in areas with extreme levels of wear – such as offices, public authorities and banks or hospitals and hotels.

This is made possible by a special manufacturing process, in which the dye is already infused in the fibre during production and not – as is customary elsewhere – applied externally. As a result, a long-lasting and extremely colour-fast dye permeation is achieved right through to the fibre's core. It is a production method that offers even more advantages because, at the same time, it reduces the demands placed on valuable resources and the environment. For example, it dispenses with the subsequent wet dyeing process required for the vat dyeing of off-white threads. This guarantees considerable reductions in the consumption of process water and the production of wastewater. And since it also dispenses with the warm-up procedure for dyeing facilities customary elsewhere, it also saves considerable energy.

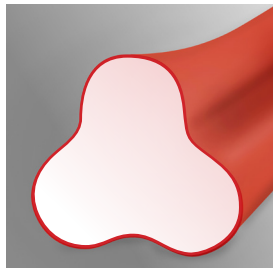


Macro photograph of a SolutionDyed fibre

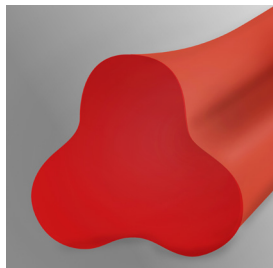
## Advantages of SolutionDyed at a glance

- Special manufacturing process in which the dye is infused in the fibres during production, achieving dye permeation of the whole fibre right through to the core
- Extremely colour-fast, long-lasting, hard-wearing and easy to maintain
- Also withstands UV radiation and extreme wear and tear (e.g. aggressive detergents)
- Ideal for use in areas with high levels of public use (e.g. offices, public authorities, banks, hotels, hospitals)
- Environmentally friendly, resource-saving production method that saves considerable quantities of water, wastewater and energy

**ANKER**  
PROFESSIONAL CARPET



Conventional externally dyed fibre



Dye-permeated SolutionDyed fibre